



Title Plan - LT 562674

Survey Number LT 562674
Surveyor Reference E20198 Rosemerryn S15
Surveyor Nicholas Johan Jagvik
Survey Firm Davie Lovell-Smith Ltd
Surveyor Declaration I Nicholas Johan Jagvik, being a licensed cadastral surveyor, certify that:
(a) this dataset provided by me and its related survey are accurate, correct and in accordance with the Cadastral Survey Act 2002 and the Rules for Cadastral Survey 2010, and
(b) the survey was undertaken by me or under my personal direction.
Declared on 26 Jul 2021 03:04 PM

Survey Details

Dataset Description Lots 544-585, 709 & 7006 being subdivision of Lot 708 DP 556769
Status Approved as to Survey
Land District Canterbury **Survey Class** Class A
Submitted Date 26/07/2021 **Survey Approval Date** 19/08/2021
Deposit Date

Territorial Authorities

Selwyn District

Comprised In

RT 973332

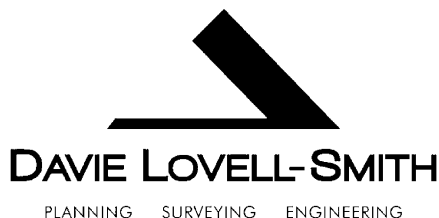
Created Parcels

Parcels	Parcel Intent	Area	RT Reference
Lot 544 Deposited Plan 562674	Fee Simple Title	0.0518 Ha	1002444
Lot 545 Deposited Plan 562674	Fee Simple Title	0.0547 Ha	1002445
Lot 546 Deposited Plan 562674	Fee Simple Title	0.0513 Ha	1002446
Lot 547 Deposited Plan 562674	Fee Simple Title	0.0426 Ha	1002447
Lot 548 Deposited Plan 562674	Fee Simple Title	0.0417 Ha	1002448
Lot 549 Deposited Plan 562674	Fee Simple Title	0.0611 Ha	1002449
Lot 550 Deposited Plan 562674	Fee Simple Title	0.0562 Ha	1002450
Lot 551 Deposited Plan 562674	Fee Simple Title	0.0563 Ha	1002451
Lot 552 Deposited Plan 562674	Fee Simple Title	0.0607 Ha	1002452
Lot 553 Deposited Plan 562674	Fee Simple Title	0.0418 Ha	1002453
Lot 554 Deposited Plan 562674	Fee Simple Title	0.0427 Ha	1002454
Lot 555 Deposited Plan 562674	Fee Simple Title	0.0612 Ha	1002455
Lot 556 Deposited Plan 562674	Fee Simple Title	0.0546 Ha	1002456
Lot 557 Deposited Plan 562674	Fee Simple Title	0.0424 Ha	1002457
Lot 558 Deposited Plan 562674	Fee Simple Title	0.0424 Ha	1002458
Lot 559 Deposited Plan 562674	Fee Simple Title	0.0519 Ha	1002459
Lot 560 Deposited Plan 562674	Fee Simple Title	0.0700 Ha	1002460
Lot 561 Deposited Plan 562674	Fee Simple Title	0.0700 Ha	1002461
Lot 562 Deposited Plan 562674	Fee Simple Title	0.0700 Ha	1002462
Lot 563 Deposited Plan 562674	Fee Simple Title	0.0700 Ha	1002463

Title Plan - LT 562674

Created Parcels

Parcels	Parcel Intent	Area	RT Reference
Lot 564 Deposited Plan 562674	Fee Simple Title	0.0802 Ha	1002464
Lot 565 Deposited Plan 562674	Fee Simple Title	0.0679 Ha	1002465
Lot 566 Deposited Plan 562674	Fee Simple Title	0.0679 Ha	1002466
Lot 567 Deposited Plan 562674	Fee Simple Title	0.0696 Ha	1002467
Lot 568 Deposited Plan 562674	Fee Simple Title	0.0696 Ha	1002468
Lot 569 Deposited Plan 562674	Fee Simple Title	0.0708 Ha	1002469
Lot 570 Deposited Plan 562674	Fee Simple Title	0.0620 Ha	1002470
Lot 571 Deposited Plan 562674	Fee Simple Title	0.0620 Ha	1002471
Lot 572 Deposited Plan 562674	Fee Simple Title	0.0620 Ha	1002472
Lot 573 Deposited Plan 562674	Fee Simple Title	0.0620 Ha	1002473
Lot 574 Deposited Plan 562674	Fee Simple Title	0.0620 Ha	1002474
Lot 575 Deposited Plan 562674	Fee Simple Title	0.0620 Ha	1002475
Lot 576 Deposited Plan 562674	Fee Simple Title	0.0619 Ha	1002476
Lot 577 Deposited Plan 562674	Fee Simple Title	0.0691 Ha	1002477
Lot 578 Deposited Plan 562674	Fee Simple Title	0.0645 Ha	1002478
Lot 579 Deposited Plan 562674	Fee Simple Title	0.0702 Ha	1002479
Lot 580 Deposited Plan 562674	Fee Simple Title	0.0727 Ha	1002480
Lot 581 Deposited Plan 562674	Fee Simple Title	0.0738 Ha	1002481
Lot 582 Deposited Plan 562674	Fee Simple Title	0.0736 Ha	1002482
Lot 583 Deposited Plan 562674	Fee Simple Title	0.0720 Ha	1002483
Lot 584 Deposited Plan 562674	Fee Simple Title	0.0691 Ha	1002484
Lot 585 Deposited Plan 562674	Fee Simple Title	0.0667 Ha	1002485
Lot 709 Deposited Plan 562674	Fee Simple Title	36.4709 Ha	1002486
Lot 7006 Deposited Plan 562674	Vesting on Deposit for Road	1.1081 Ha	
Area A Deposited Plan 562674	Easement		
Area B Deposited Plan 562674	Easement		
Area C Deposited Plan 562674	Easement		
Area D Deposited Plan 562674	Easement		
Area E Deposited Plan 562674	Easement		
Area F Deposited Plan 562674	Easement		
Area G Deposited Plan 562674	Easement		
Area H Deposited Plan 562674	Easement		
Area I Deposited Plan 562674	Easement		
Area J Deposited Plan 562674	Easement		
Area K Deposited Plan 562674	Easement		
Area L Deposited Plan 562674	Easement		
Area M Deposited Plan 562674	Easement		
Area N Deposited Plan 562674	Easement		
Area O Deposited Plan 562674	Easement		
Total Area		40.1640 Ha	



Davie, Lovell-Smith Ltd
116 Wrights Road, Addington
PO Box 679, Christchurch 8140
New Zealand
Telephone (03) 379-0793,
E-mail: office@dls.co.nz

Surveyor Reference: E20198 Rosemerryn S15

DP 562674

MEMORANDUM OF EASEMENTS IN GROSS

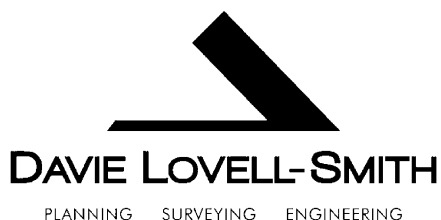
Purpose	Servient Tenement (Burdened Land)	Shown	Grantee
Right to convey water in gross	Lot 709	D, E & F	Selwyn District Council
Right to convey electricity in gross	Lot 709	E & F	Selwyn District Council
Right to drain water in gross	Lot 709	C, D, E, G & H	Selwyn District Council
Right to drain sewage in gross	Lot 709	B, C, D, E, G & I	Selwyn District Council

SCHEDULE OF EASEMENTS IN GROSS

Purpose	Servient Tenement (Burdened Land)	Shown	Grantee
Right to convey electricity in gross	Lot 709	D & E	Orion New Zealand Limited
Right to convey telecommunications in gross	Lot 709	D & E	Enable Networks Limited

SCHEDULE OF EXISTING EASEMENTS

Purpose	Servient Tenement (Burdened Land)	Shown	Document
Right to drain water in gross	Lot 709	O	EI 9370643.10
Right of way and a right to convey electricity	Lot 709	M	EI 10715212.6



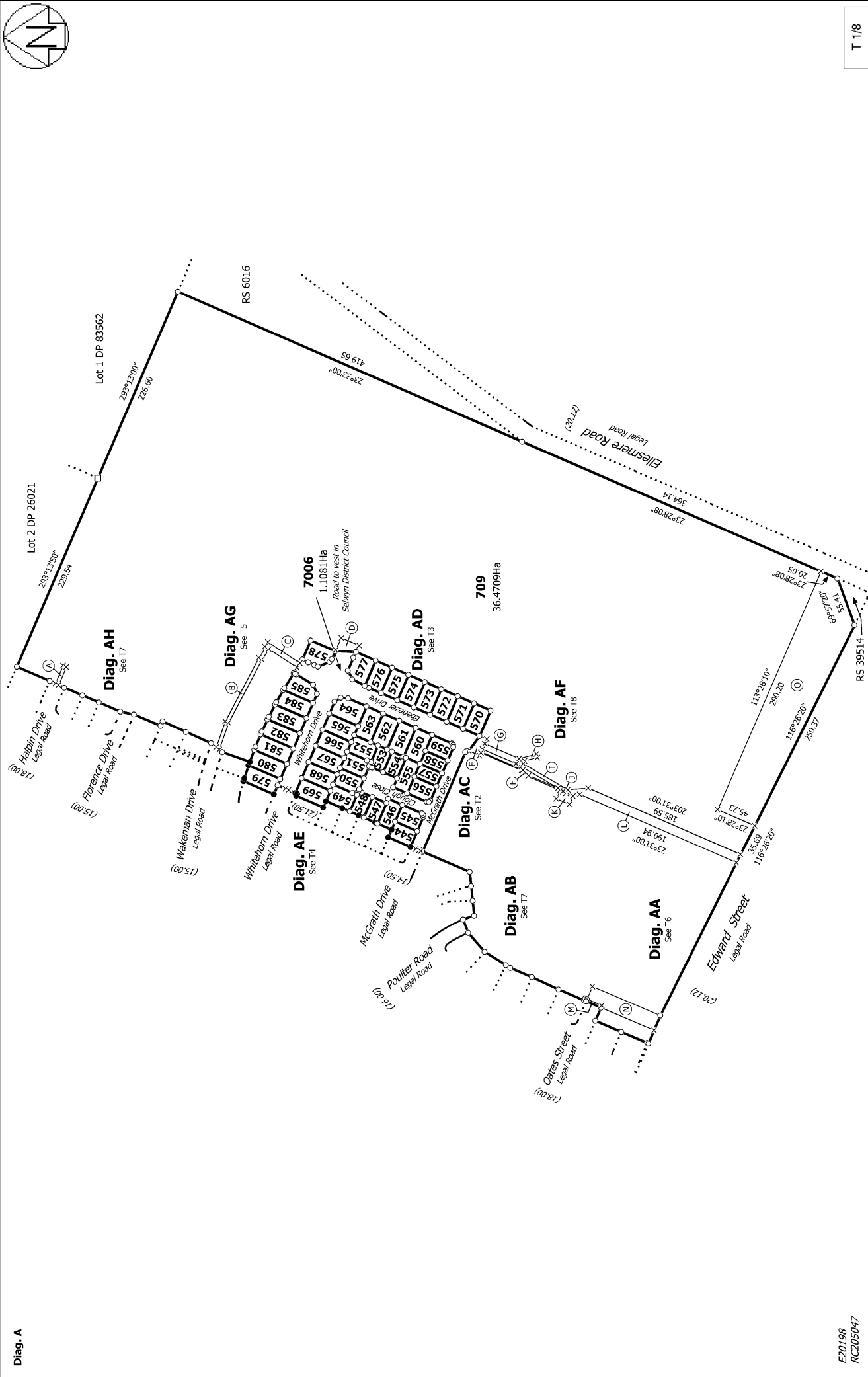
Davie, Lovell-Smith Ltd
 116 Wrights Road, Addington
 PO Box 679, Christchurch 8140
 New Zealand
 Telephone (03) 379-0793,
 E-mail: office@dls.co.nz

Surveyor Reference: E20198 Rosemerryn S15

DP 562674

SCHEDULE OF EXISTING EASEMENTS

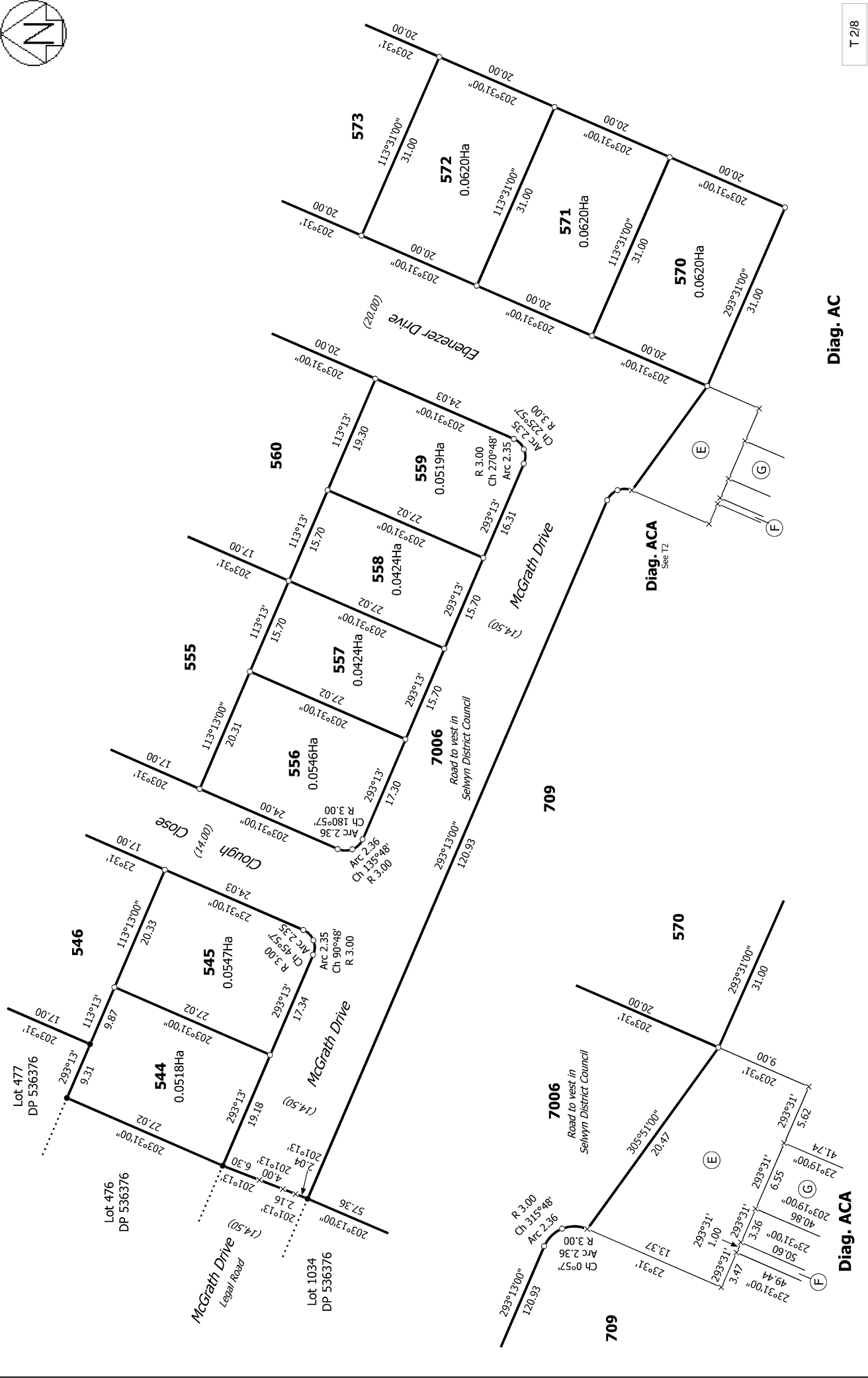
Purpose	Servient Tenement (Burdened Land)	Shown	Document
Right to drain water in gross	Lot 709	M & N	EI 10715212.7
Right to convey electricity in gross	Lot 709	M	EI 10715212.9
Right to drain sewage in gross	Lot 709	J, K & L	EI 11464071.9
Right to convey water and electricity in gross	Lot 709	J & K	EI 11464071.9
Right to drain sewage in gross	Lot 709	A	EI 11963497.11



E20198
 RC205047

T 1/8

<p>Land District: Canterbury</p> <p>Digitally Generated Plan</p> <p>Generated on: 19/08/2021 4:54pm Page 5 of 12</p>	<p>Lots 544-585, 709 & 7006 being subdivision of Lot 708 DP 556769</p>	<p>Surveyor: Nicholas Johan Jagvik Firm: Davie Lovell-Smith Ltd</p>	<p>Title Plan LT 562674 Approved on: 19/08/2021</p>
---	---	--	--



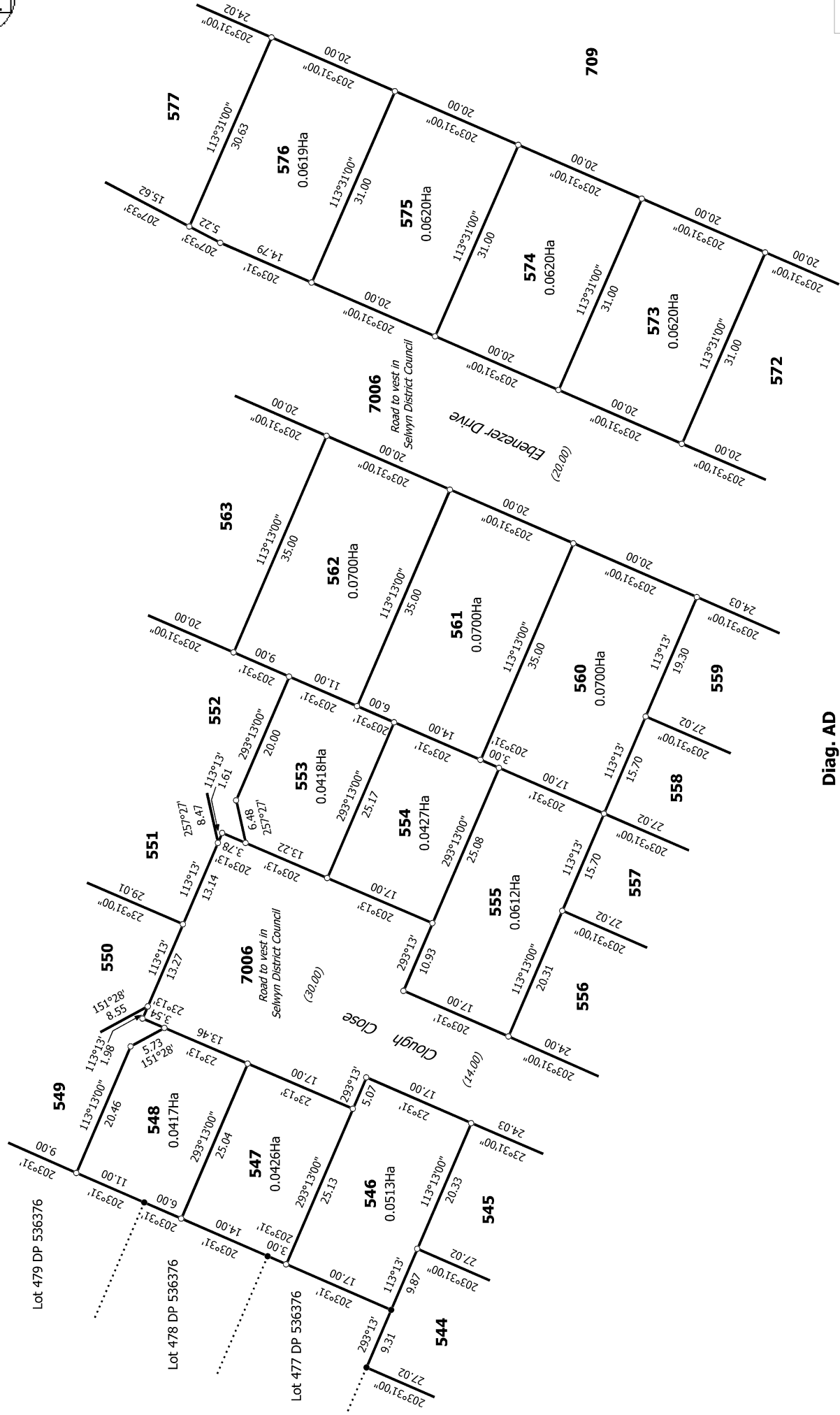
Diag. AC

T 2/8

<p>Land District: Canterbury</p> <p>Digitally Generated Plan</p> <p>Generated on: 19/08/2021 4:54pm Page 6 of 12</p>	<p>Lots 544-585, 709 & 7006 being subdivision of Lot 708 DP 556769</p>	<p>Surveyor: Nicholas Johan Jagvilk</p> <p>Firm: Davie Lovell-Smith Ltd</p>	<p>Title Plan</p> <p>LT 562674</p> <p>Approved on: 19/08/2021</p>
---	---	---	---

Diag. ACA





Diag. AD

T 3/8

Land District: Canterbury

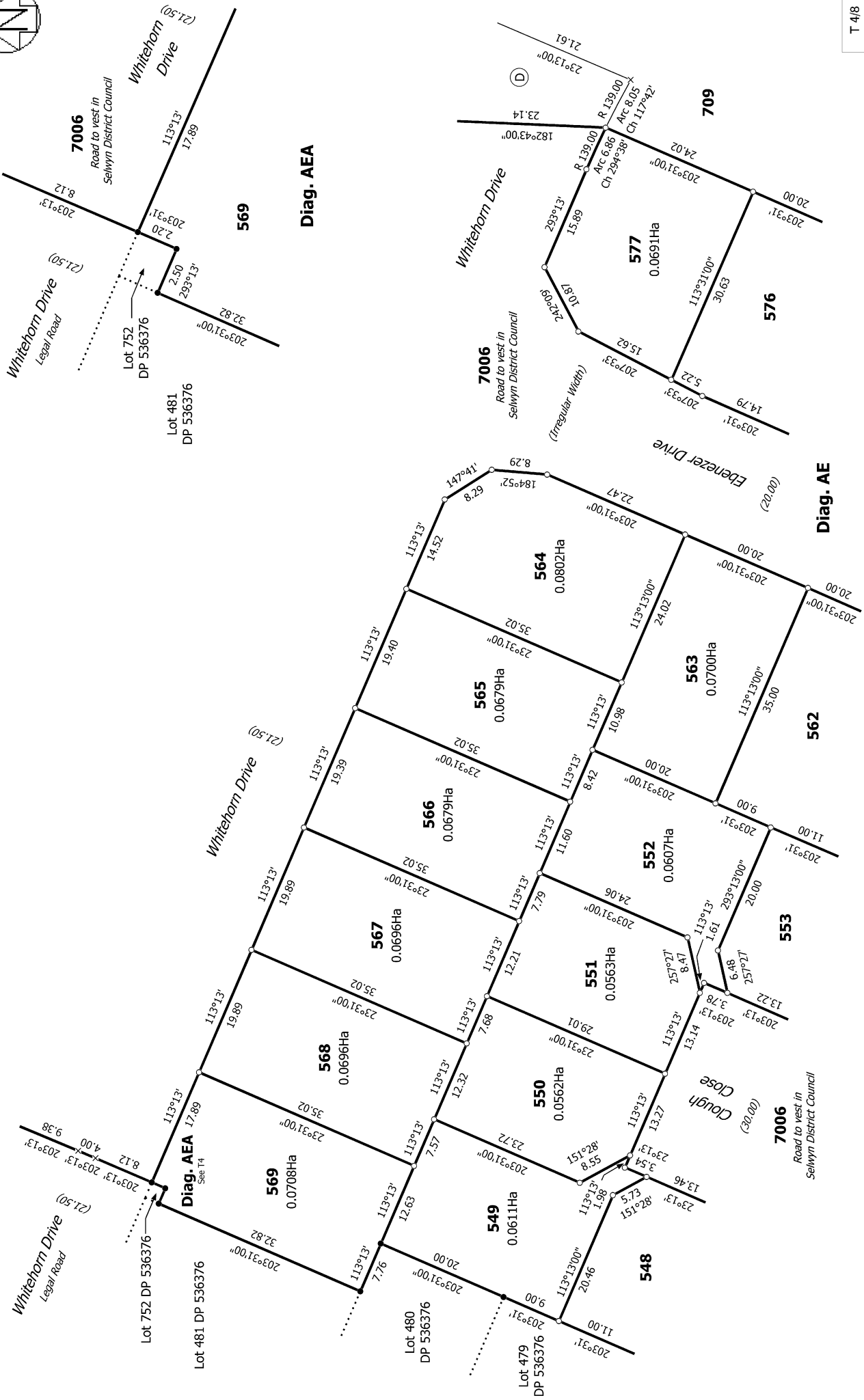
Digitally Generated Plan

Generated on: 19/08/2021 4:54pm Page 7 of 12

Lots 544-585, 709 & 7006 being subdivision of Lot 708 DP 556769

Surveyor: Nicholas Johan Jagvirk
Firm: Davie Lovell-Smith Ltd

Title Plan
LT 562674
Approved on: 19/08/2021



T 4/8

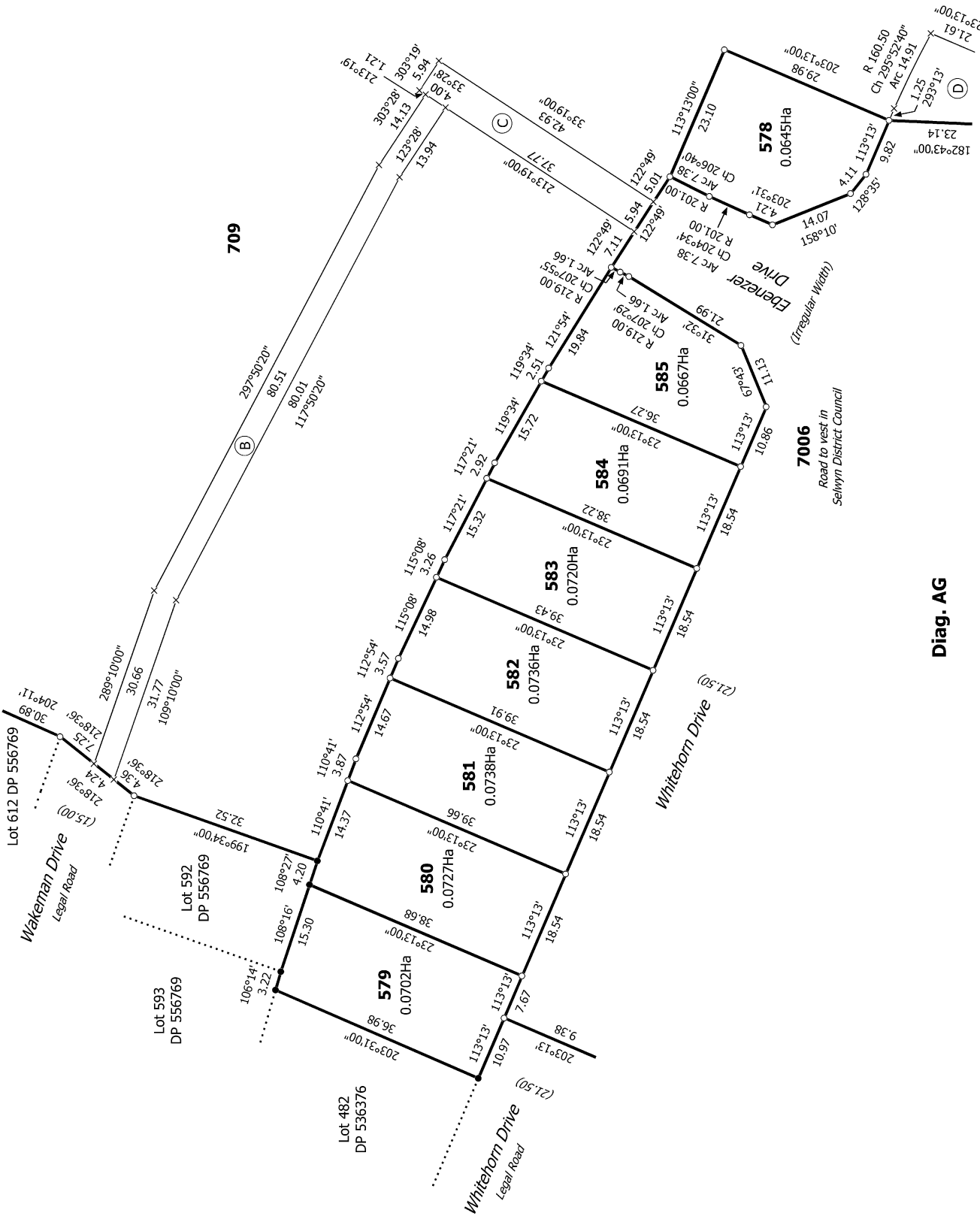
Title Plan
LT 562674
Approved on: 19/08/2021

Surveyor: Nicholas Johan Jagvik
Firm: Davie Lovell-Smith Ltd

Lots 544-585, 709 & 7006 being subdivision of Lot 708 DP 556769

Land District: Canterbury

Digitally Generated Plan
Generated on: 19/08/2021 4:54pm Page 8 of 12



Diag. AG

T 5/8

Land District: Canterbury

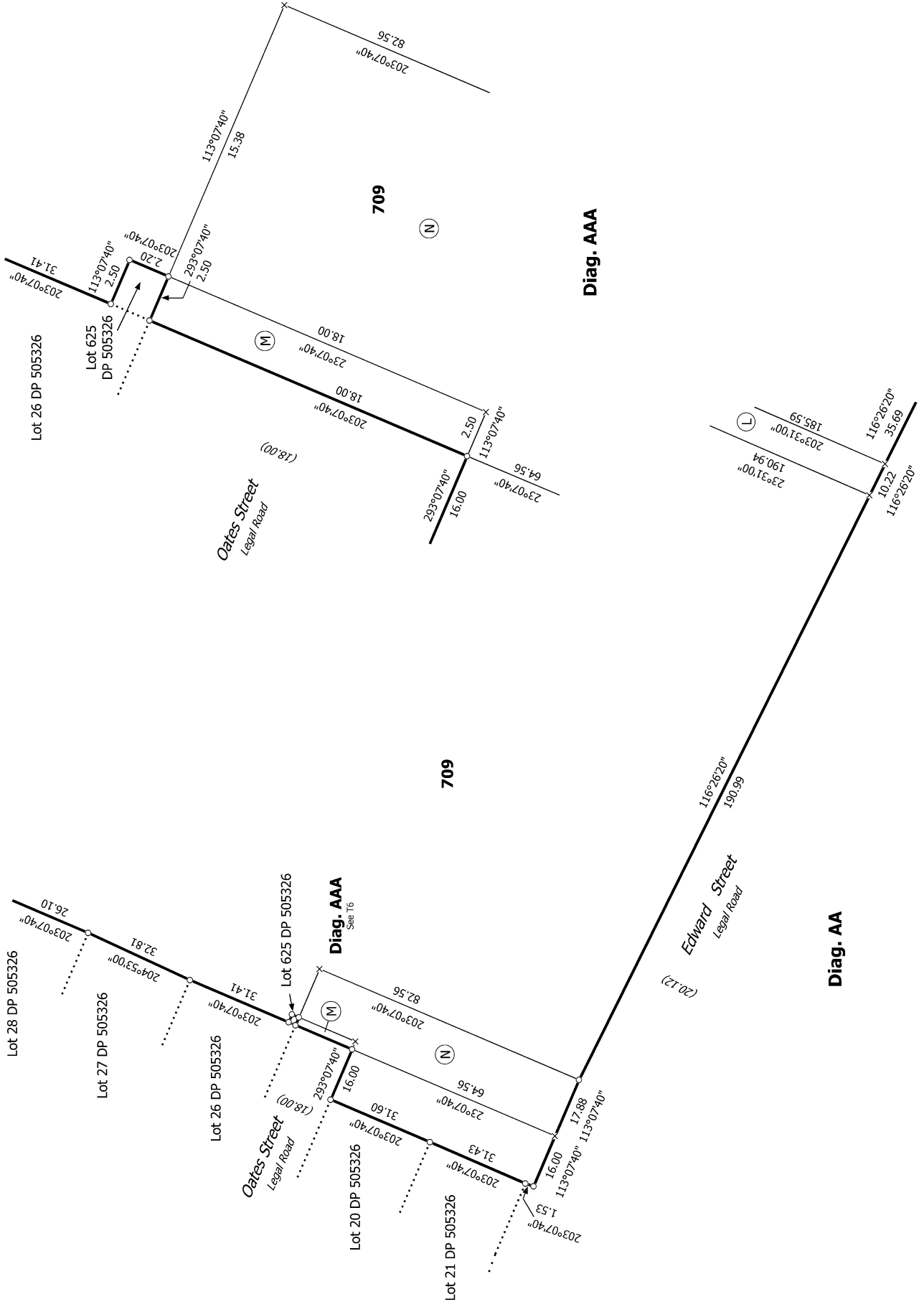
Digitally Generated Plan

Generated on: 19/08/2021 4:54pm Page 9 of 12

Lots 544-585, 709 & 7006 being subdivision of Lot 708 DP 556769

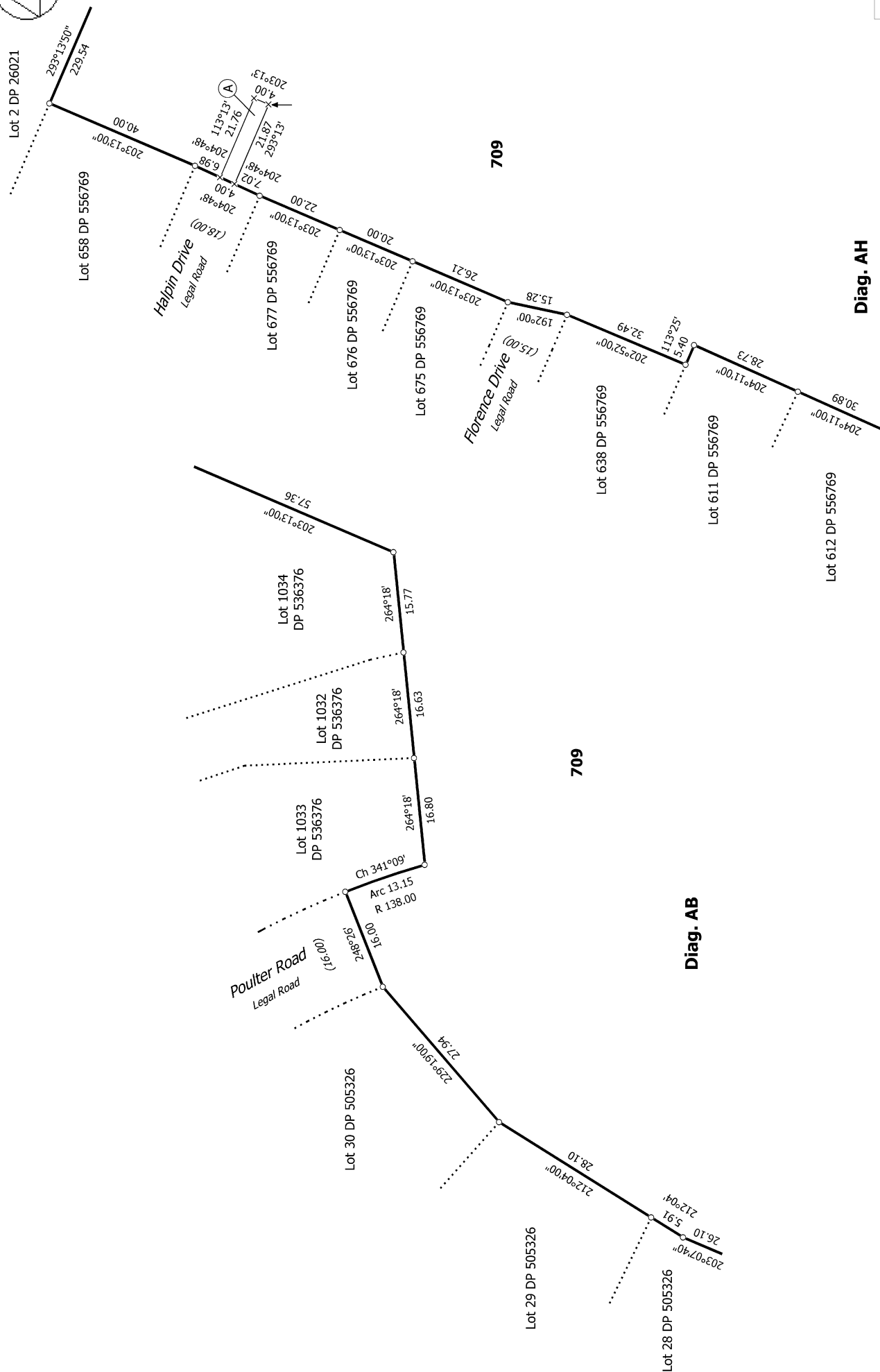
Surveyor: Nicholas Johan Jagvik
Firm: Davie Lovell-Smith Ltd

Title Plan
LT 562674
Approved on: 19/08/2021



T 6/8

<p>Land District: Canterbury</p>	<p>Surveyor: Nicholas Johan Jagvik Firm: Davie Lovell-Smith Ltd</p>	<p>Lot 544-585, 709 & 7006 being subdivision of Lot 708 DP 556769</p>
<p>Digitally Generated Plan Generated on: 19/08/2021 4:54pm Page 10 of 12</p>		<p>Title Plan LT 562674 Approved on: 19/08/2021</p>



T 7/8

Land District: Canterbury
Digitally Generated Plan
 Generated on: 19/08/2021 4:54pm Page 11 of 12

Surveyor: Nicholas Johan Jagvilk
 Firm: Davie Lovell-Smith Ltd

Diag. AB

Diag. AH

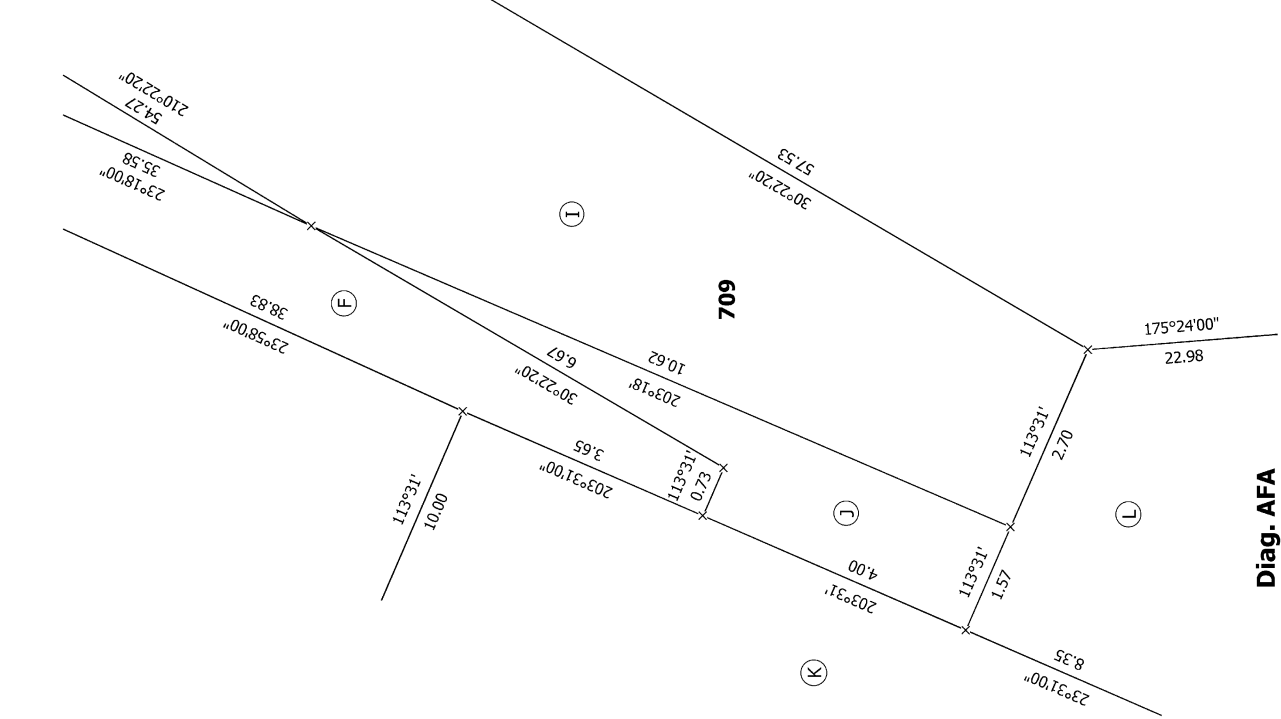
709

709

7006

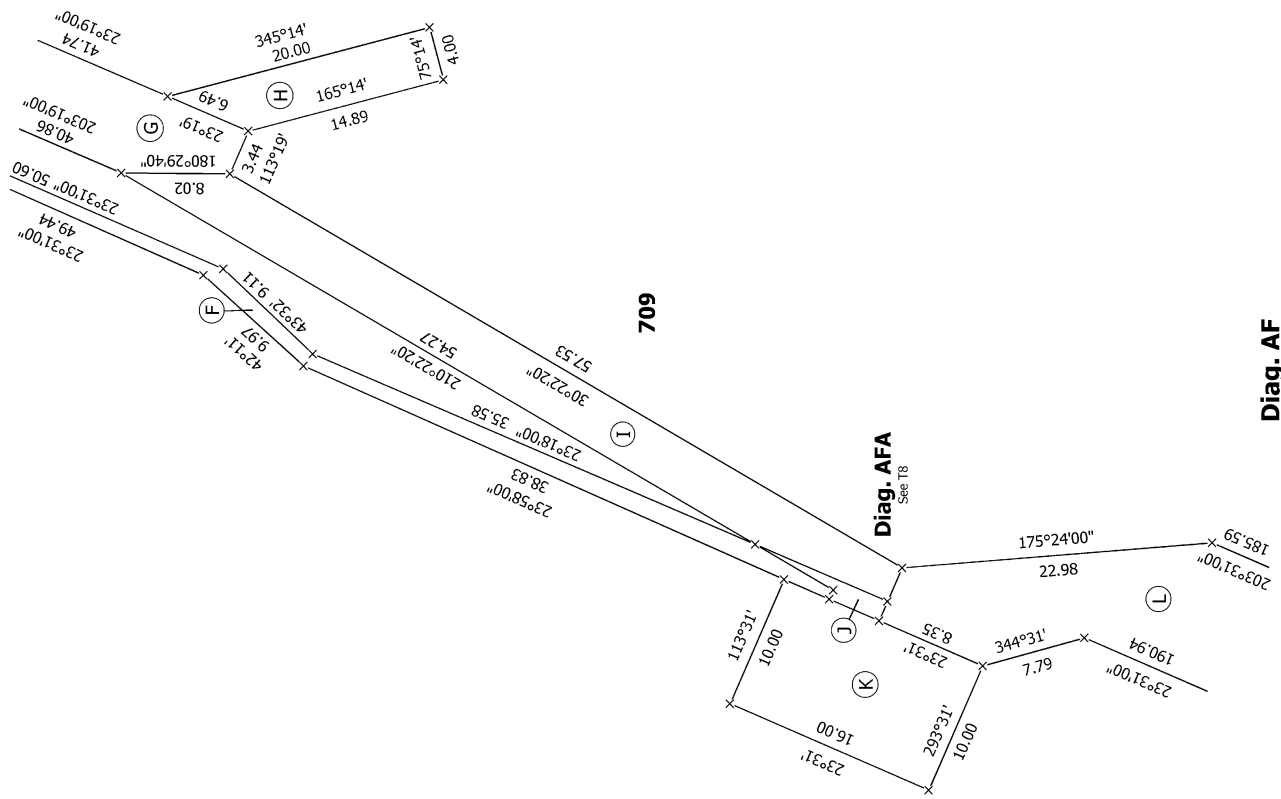
Lot 2 DP 26021
 Lot 658 DP 556769
 Lot 677 DP 556769
 Lot 676 DP 556769
 Lot 675 DP 556769
 Lot 638 DP 556769
 Lot 611 DP 556769
 Lot 612 DP 556769
 Lot 1034 DP 536376
 Lot 1033 DP 536376
 Lot 1032 DP 536376
 Lot 30 DP 505326
 Lot 29 DP 505326
 Lot 28 DP 505326

Title Plan
 LT 562674
 Approved on: 19/08/2021



Diag. AFA

T 8/8



Diag. AF

Land District: Canterbury

Digitally Generated Plan

Generated on: 19/08/2021 4:54pm Page 12 of 12

Lots 544-585, 709 & 7006 being subdivision of Lot 708 DP 556769

Surveyor: Nicholas Johan Jagvilk
Firm: Davie Lovell-Smith Ltd

Title Plan
LT 562674
Approved on: 19/08/2021